

# Former Chemical Plant – Investigation and Risk Assessment



**CLIENT : Kierbeck Property Ltd.**

**PROJECT TITLE : Former Chemical Plant Investigation and Hydrogeological Assessment**

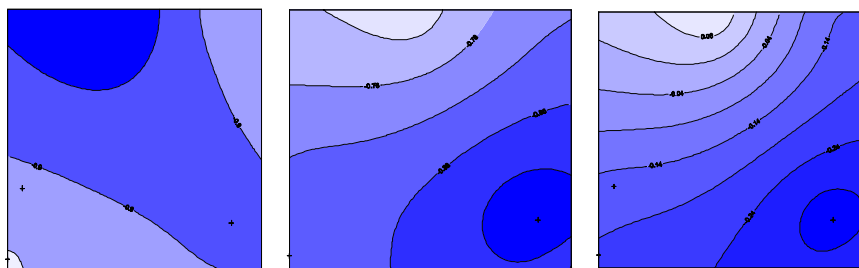
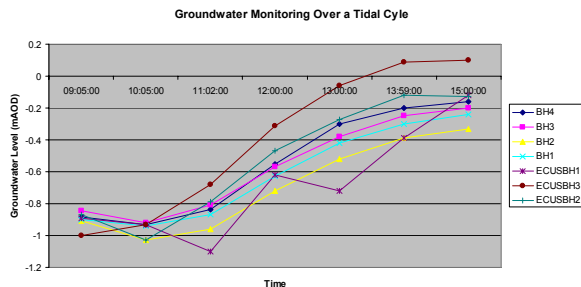
**CONTRACT PERIOD : 4 months**

Prior to being used for chemical blending, this site, on the tidal reach of the River Thames, had been used by BP for oil distribution. The investigation was carried out to prepare the site for commercial development.

The ECUS team used drilling and trial pitting across the site to recover soil samples and install groundwater monitoring wells. Following the intrusive works, the tidal influence of the river over the River Terrace Gravel aquifer were assessed through long-term monitoring.

Soil sampling and on-site monitoring and observation revealed concentrations of several contaminants within the unsaturated zone. Through groundwater monitoring we identified free product in a number of areas, together with plumes of dissolved phase contaminants including BTEX and chlorinated solvents. The potential impacts of these plumes of groundwater contamination on off-site surface water receptors were modelled to identify remediation targets. The complex influence of the tide over the groundwater flow regimes formed a major part of the study.

Having set remedial targets, ECUS provided a remediation strategy and negotiated the proposals with the relevant regulators.



**Contact**  
ECUS Ltd  
Endcliffe Holt  
343 Fulwood Rd  
Sheffield  
S10 3BQ  
UK  
Tel +44 (0) 114 2669292  
Fax +44 (0) 114 2225549  
Email [contactus@ecusltd.co.uk](mailto:contactus@ecusltd.co.uk)  
[www.ecusltd.co.uk](http://www.ecusltd.co.uk)

**Kierbeck Property Ltd.**