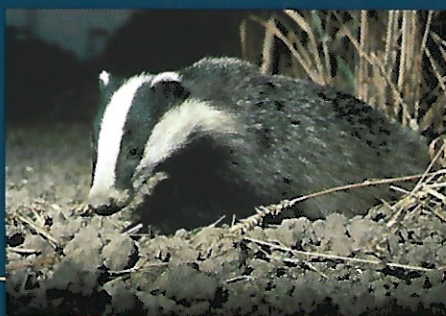




# ECUS

environmental • consultancy



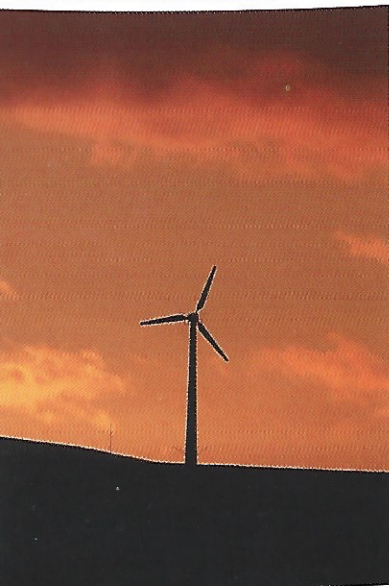
[www.ecusltd.co.uk](http://www.ecusltd.co.uk)





# ECUS

environmental • consultancy



An established professional, environmental consultancy since 1986, ECUS has earned a reputation as a centre of excellence in the environmental sciences through a unique combination of project experience and technical expertise.

ECUS's success is built upon our values of quality, independence and flexibility.

Our highly qualified team of professionals have a wealth of experience in identifying client needs and focussing on the development of practical, high quality solutions. Our clients benefit greatly from the flexible, integrated and enthusiastic approach that sets ECUS's service apart from our competitors.

ECUS's link to the University of Sheffield provides us with a number of unique capabilities:

- the ability to enhance our in-house expertise with the skills of a number of specialist technical experts;
- access to state-of-the-art research and support facilities adding substantially to the level of service we can deliver;
- an independence and impartiality of service which can be vital in environmentally-related negotiations.

If quality, professionalism and innovation are important values to your organisation, you will appreciate our service. ECUS's staff will always provide an enthusiastic and imaginative approach to problem solving on your behalf.

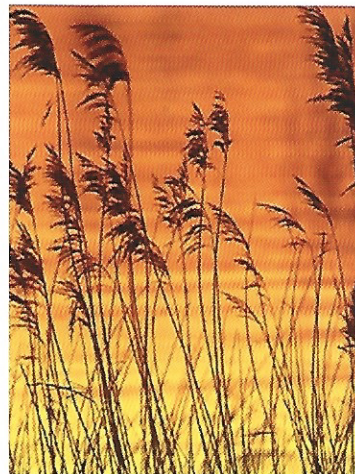
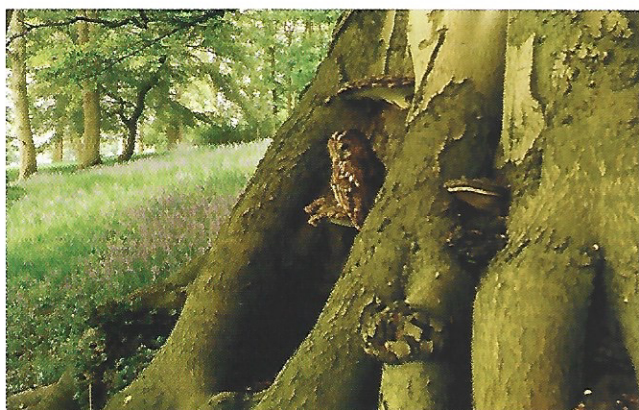


INVESTOR IN PEOPLE



## **ECUS** *ecology*

- ecological impact assessment
- ecological planning policy & development support
- aquatic ecology & water quality
- botanical survey & monitoring
- habitat creation, restoration & management
- protected species survey & mitigation
- invasive species survey & management
- research & development

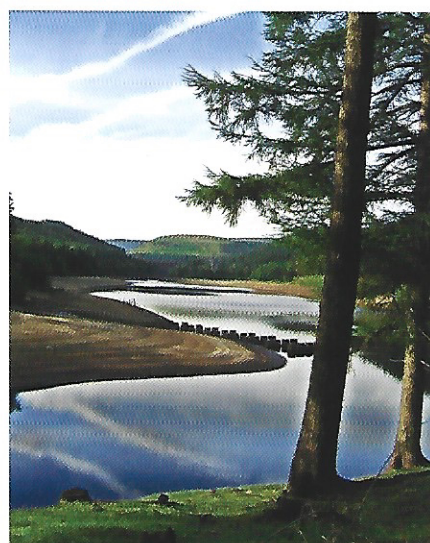


## **ECUS** *landscape*

- landscape design & planning
- sustainable greenspace regeneration
- heritage landscape conservation & restoration
- ecological landscape design & management
- brownfield reclamation & restoration
- community engagement
- landscape & visual impact assessment
- landscape character & capacity assessment

## **ECUS** *EIA*

- multi-disciplinary Environmental Impact Assessment
- Environmental Statement production
- EIA scoping
- Appropriate Assessment
- public inquiry & expert witness
- renewables, water & waste
- infrastructure & residential development
- minerals & industrial





## **ECUS** *geoscience*

- contaminated land investigation
- risk assessment
- geotechnical engineering
- remediation design, management & validation
- due diligence audits
- waste management
- gas & groundwater monitoring
- flood risk & hydrogeological assessment



## **ECUS** *environmental management*

- EMS implementation (ISO 14001/EMAS)
- bespoke & IEMA approved environmental training
- Code for Sustainable Homes assessments
- legal compliance reviews
- environmental permit applications
- corporate social responsibility (CSR)
- carbon footprint assessments
- green travel plans



[www.ecusltd.co.uk](http://www.ecusltd.co.uk)



## Select client list:

- Alcoa
- Arla Foods
- Bio UK Fuels Ltd
- Birse Civils
- Bloor Homes
- Bovis Lend Lease
- British Waterways
- BAE Systems
- BBC
- Capita Property Consultancy Ltd
- ConocoPhillips
- Caterpillar
- Costain Ltd
- Countryside Agency
- Countryside Council for Wales
- Corus Special Strip
- CITB ConstructionSkills
- DEFRA
- DLA Piper UK LLP
- Eden Project
- Environment Agency
- Esso Petroleum Co Ltd
- Eurotunnel plc
- European Space Agency
- First North West Trains
- Firth Rixson Group
- Forth Valley Primary Health Care Trust
- EON
- Gleeson Regeneration
- Gripple Ltd
- GVA Grimley
- Hager Engineering
- Haslam Homes
- Henry Boot Developments Ltd
- Highways Agency
- Hull City Council
- HBOS
- Kier Group
- Leeds City Council
- Living Spaces
- Luton Borough Council
- Mineral Industry Research Organisation
- Mineral Planning Group
- Montague Architects
- Murphy Group
- MITIE
- National Construction College
- National Grid Transco plc
- National Trust
- Natural England
- Noranda Mining and Exploration
- Northern Rail
- N Power
- Outokumpu Stainless Ltd
- Portakabin Ltd
- Rio Tinto
- Rotherham & Barnsley Chamber of Commerce
- Royal Bank of Scotland
- RSPB
- Sanctuary Housing Association
- Scottish Natural Heritage
- Sheffield City Council
- Sheffield Chamber of Commerce & Industry
- Sheffield Primary Care Trust
- Smith and Nephew
- SEPA
- Tarmac
- Taylor Woodrow
- Turner & Townsend Project Management
- UK Atomic Energy Authority
- UK Coal Mining Ltd
- University of Sheffield
- Wakefield Metropolitan District Council
- Woodford Group
- WT Partnership
- Yorkshire Forward
- Yorkshire Water plc
- Yorkshire Windows

ECUS Ltd  
Endcliffe Holt  
343 Fulwood Road  
Sheffield  
S10 3BQ  
United Kingdom

t: +44 (0)114 266 9292  
f: +44 (0)114 266 8243  
e: [contactus@ecusltd.co.uk](mailto:contactus@ecusltd.co.uk)  
w: [www.ecusltd.co.uk](http://www.ecusltd.co.uk)





